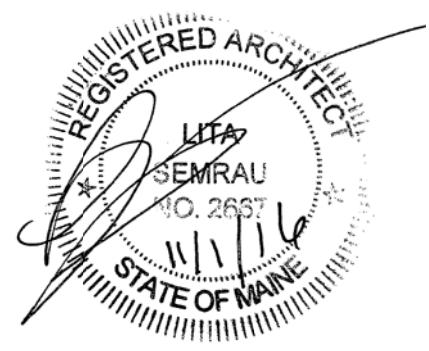




**PORT CITY ARCHITECTURE**

65 NEWBURY STREET  
PORTLAND, ME 04101  
207.761.9000



- GENERAL DEMO/ RESTORATION NOTES:
- CLEAN AND PREP ALL LINTELS FOR PAINT
  - CONTRACTOR TO VERIFY & REMOVE BY GRINDING OUT ANY MTL ELEMENTS EMBEDDED IN BRICK USED ON ITEMS THAT ARE BEING REMOVED & REPOINTED AS REQ'D
  - REMOVE ALL EXISTING CAULK. OPEN JOINTS UP TO 1/4" WIDE SHALL BE RECAULKED. JOINTS LARGER THAN 1/4" WIDE TO RECEIVE EPOXY SECTION REPAIR.

- RESTORATION KEY
- MORTAR SOFT OR MISSING  
ACTION: CUT BACK 3/4" -(3) LIFTS 1/4" EACH (85%)  
15% DEEP REPOINT W/ FINAL 3/4", (3) LIFTS
  - SEE NOTE ABOVE - BACK SIDE OF SECOND STORY BRICK PARAPET
  - ABANDONED METAL ELEMENTS TO BE GROUND OUT + REPOINTED AS REQ'D
  - STITCH BRICK TOGETHER  
-SEE STRUCTURAL

- Consultants:
- MECHANICAL SYSTEMS ENGINEERS, INC.  
100 Commercial Street, Portland, ME 04101  
Tel: (207) 846-3443 • Fax: (207) 846-3443  
msengr.com
  - Structural Integrity  
Consulting Engineers, Inc.
  - SWIFTCURRENT  
Engineering Services

**PERMIT SET  
11-1-16**

**NOT FOR  
CONSTRUCTION**

**NEWPORT  
DEVELOPMENT  
ASSOCIATES**

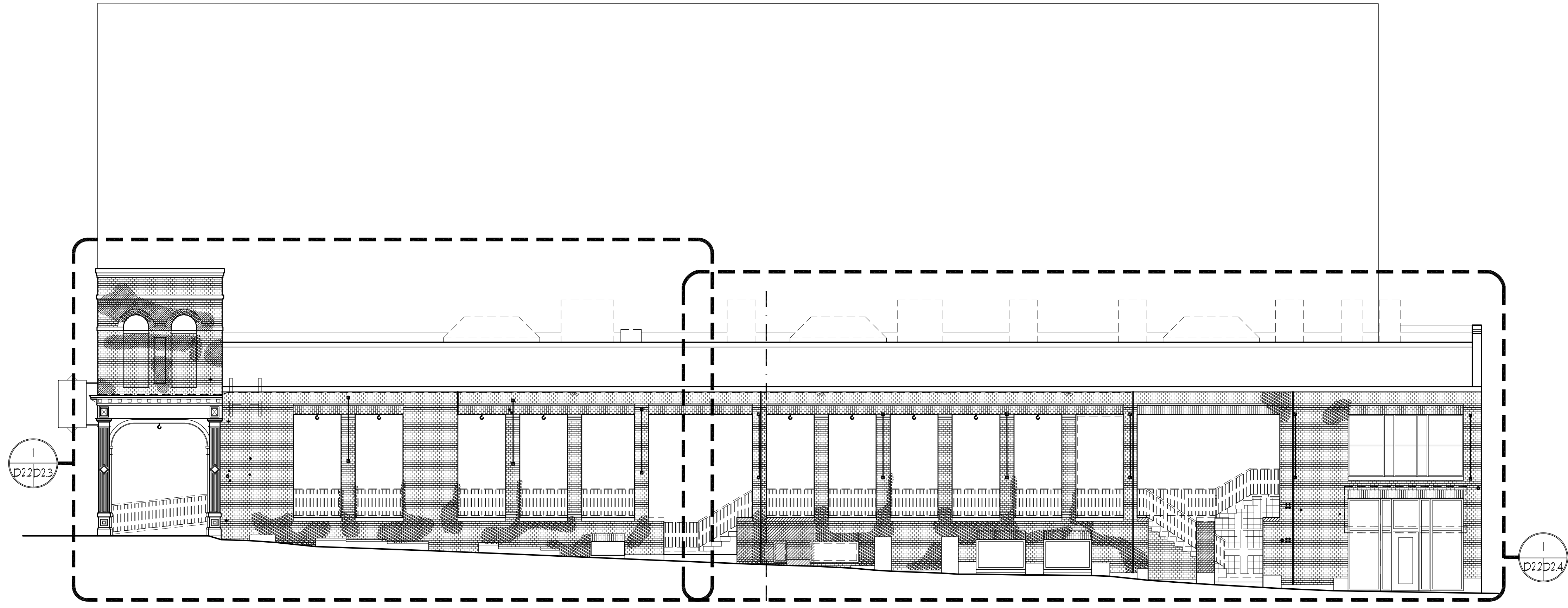
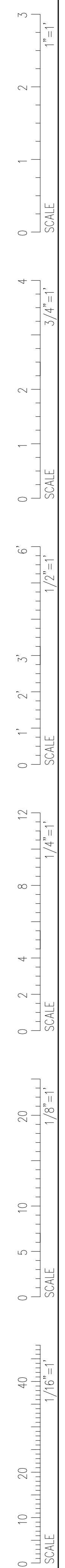
164 Middle St  
Portland, Maine

#	DATE	DESCRIPTION

Date Issued: November 1, 2016  
 Project Number: 16201  
 Drawing Scale: AS NOTED

**DEMO EXTERIOR ELEVATIONS**

Drawn By: JFP CM, TS CR  
 Checked By: LAS  
D2.2



**1 MARKET ST EXTERIOR ELEVATION**  
SCALE: 1/8" = 1'-0"